

PREMIER ENVOL

Comp. Christophe Gaurier

Harpe

$\text{♩} = 70$

f

5

10

mf

15

20

20 8 4 8 4 65 8

20 8 4 8 4 8

mf

75

1

First system of a piano score. The treble clef staff contains a melodic line with eighth and sixteenth notes, including some accidentals. The bass clef staff is empty, indicated by a whole rest.

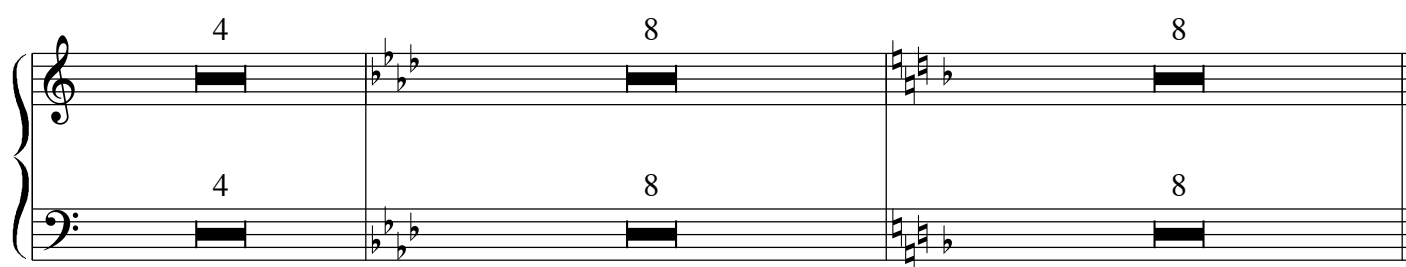
Second system of a piano score. The treble clef staff continues the melodic line. A measure number '80' is written above the staff. The bass clef staff is empty, indicated by a whole rest.

Third system of a piano score. The treble clef staff continues the melodic line. The bass clef staff is empty, indicated by a whole rest.

Fourth system of a piano score. The treble clef staff continues the melodic line. The bass clef staff is empty, indicated by a whole rest.

Fifth system of a piano score. The treble clef staff continues the melodic line. A measure number '85' is written above the staff. The bass clef staff is empty, indicated by a whole rest.

Sixth system of a piano score. The treble clef staff continues the melodic line. The system concludes with a double bar line and a final measure containing a whole note chord. The number '8' is written above and below the staff in the final measure. The bass clef staff is empty, indicated by a whole rest.



L'introduction peut être jouée par un jeune élève débutant sur harpe celtique.

Le développement en doubles croches doit être joué par un élève confirmé sur harpe de concert.